

## Wired Controller Setup



The Griffin wired controller allows remote control over scrolling and stop/start . To setup the controller follow the instructions below.

- 1) Load the PowerMate software first
- 2) Connect the Griffin controller to your USB port
- 3) Open the PowerMate application (you will see the setup box in fig.1)
- 4) Click the "User Action" drop down menu and select "Rotate Right"
- 5) Click the "Computer Action" drop down menu and choose "send key"
- 6) Click the button "Change Key" towards the bottom
- 7) A "Enter Keystroke" dialog box will open (fig. 2)
- 8) Press the DOWN ARROW on your keyboard then press OK
- 9) Click the "User Action" drop down menu and select "Rotate Left"
- 10) Click the "Computer Action" drop down menu and choose "send key"
- 11) Click the button "Change Key" towards the bottom
- 12) Press the UP ARROW arrow on your keyboard then press OK
- 13) Again click the "User Action" drop down menu and select "Click"
- 14) Click the "Computer Action" drop down menu and choose "send key"
- 15) Press the SPACEBAR arrow on your keyboard then press OK
- 16) Check the box marked "Global Only"
- 17) Click "Apply Now" and "OK" in the PowerMate application to save and exit.

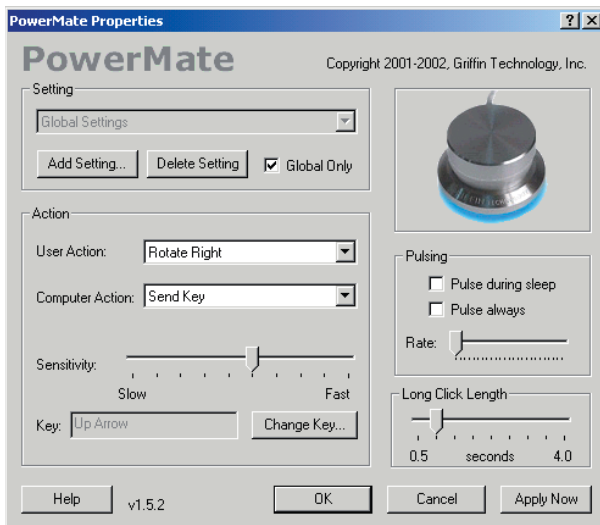


Figure 1

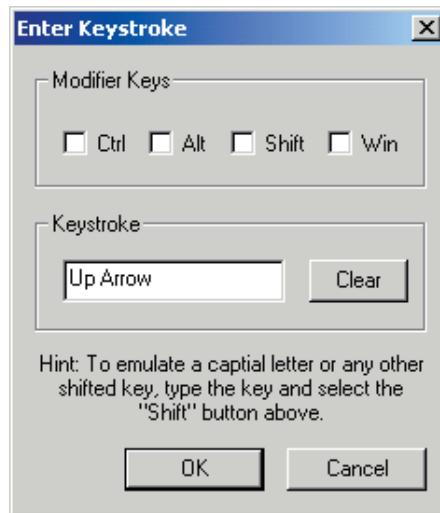


Figure 2

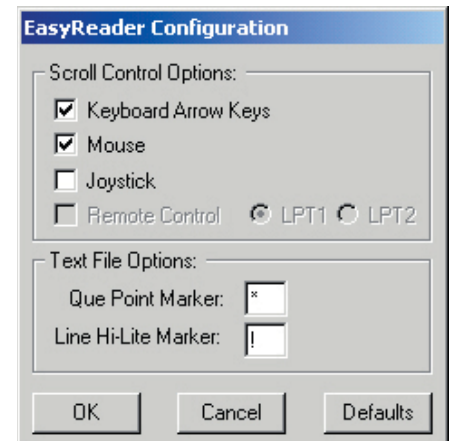


Figure 3